

Renfrew Road
Redhouse
Sunderland
SR5 5PS



good life
sales & lettings



Renfrew Road

£95,000

INTRODUCTION

2 BEDROOM SEMI DETACHED FAMILY HOME IN POPULAR LOCATION.

ENTRANCE HALL

Entrance via white uPVC door, laminate wood-effect flooring, double radiator, cupboard concealing the gas meter, carpeted stairs to first floor landing, door to lounge.

LOUNGE

Feature fire surround with natural stone hearth and back and built-in gas fire. Laminate wood-effect flooring, double radiator, front facing white uPVC double-glazed window, door leading off to the kitchen.

KITCHEN

A range of wall and floor units in a medium wood-effect finish, built-in electric oven, 4 ring electric hob, built-in extractor fan, space and plumbing for a washing machine if required, space for a fridge/freezer. Stainless steel sink with bowl and a half, single drainer and matching Mono-bloc tap. Vinyl tile-effect flooring, double radiator, 2 rear facing white uPVC double-glazed windows, partially glazed door leading out to the rear patio.

FIRST FLOOR LANDING

Loft hatch, 3 doors leading off, 2 to bedrooms 1 to the bathroom.

BEDROOM 1

Carpet flooring, double radiator, front facing white uPVC double glazed window.

BEDROOM 2

Single radiator, rear facing white uPVC double glazed window.

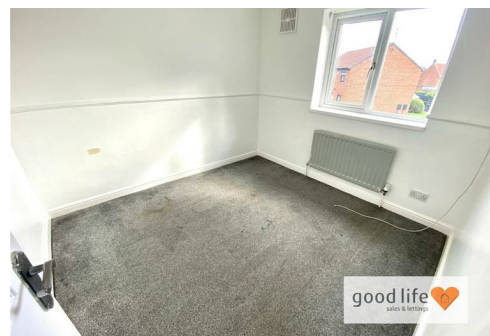
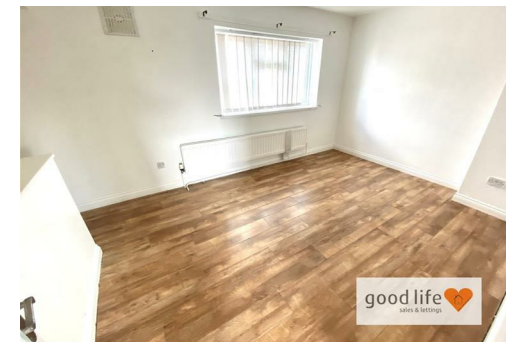
BATHROOM

White bathroom suite comprising of; toilet with low level cistern, sink with single pedestal and chrome taps, bath with panel, chrome taps and electric shower over. Vinyl wood effect flooring, single radiator, white uPVC double glazed window with privacy glass.

EXTERNALLY

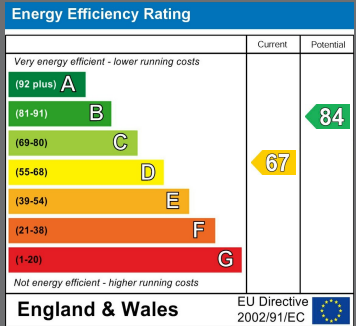
The property benefits from a front garden with lawns and borders and shrubs, gate leading to the rear of the property and rear garden, outside tap. Purpose built shed providing additional storage.

There is a small rear garden with patio area, area laid to lawn.



Local Authority
Sunderland

Council Tax Band
A



Agents Note: Whilst every care has been taken to prepare these particulars, they are for guidance purposes only. All measurements are approximate and are for general guidance purposes only and whilst every care has been taken to ensure their accuracy, they should not be relied upon and potential buyers/tenants are advised to recheck the measurements



Good Life Homes - Sales

46 Windsor Terrace
Sunderland
Tyne and Wear
SR2 9QF

Contact

0191 565 6655

info@goodlifelifehomes.co.uk

www.goodlifelifehomes.co.uk

good life 
sales & lettings